



Training
Qualifications UK

End-Point Assessment Price List

2023/24

Introduction

Training Qualifications UK offers standard EPA fees for apprentice registration and gateway submissions. The cost of these fees varies depending on the specific EPA standard chosen, ensuring flexibility and tailored pricing options for apprentices. For further information about standard EPA registration fees and standard EPA gateway fees, please visit our [Fees & Pricing](#) page.

Payment Terms

Registration and Gateway fee

Training Qualifications UK will invoice a registration fee (~25%) upon registration and a gateway fee (~75%) upon gateway submission. Gateway fees will be adjusted depending upon the remote or face-to-face assessment preference.

Re-sit fee

Training Qualifications UK offers one free re-sit per multiple-choice test where included within a standard. Assessment components re-sits will be charged per assessment and standard.

Cancellation fee

A cancellation fee applies where a confirmed assessment component or a planning meeting is either:

- cancelled by the training provider, employer, or apprentice with less than 5 working days' notice
- not attended by the Apprentice
- a late submission of a project, after the agreed deadline.

Invigilation fee

An invigilation surcharge is applied in scenarios where:

- an employee of contractor of TQUK conducts the invigilation in person
- the exam component is assessed by "short answer question".

Table of Contents

Introduction

Payment Terms

Adult Care

Business Generics

Childcare and Early Years

Digital

Education

HR

Hair

Learning and Development

Poultry

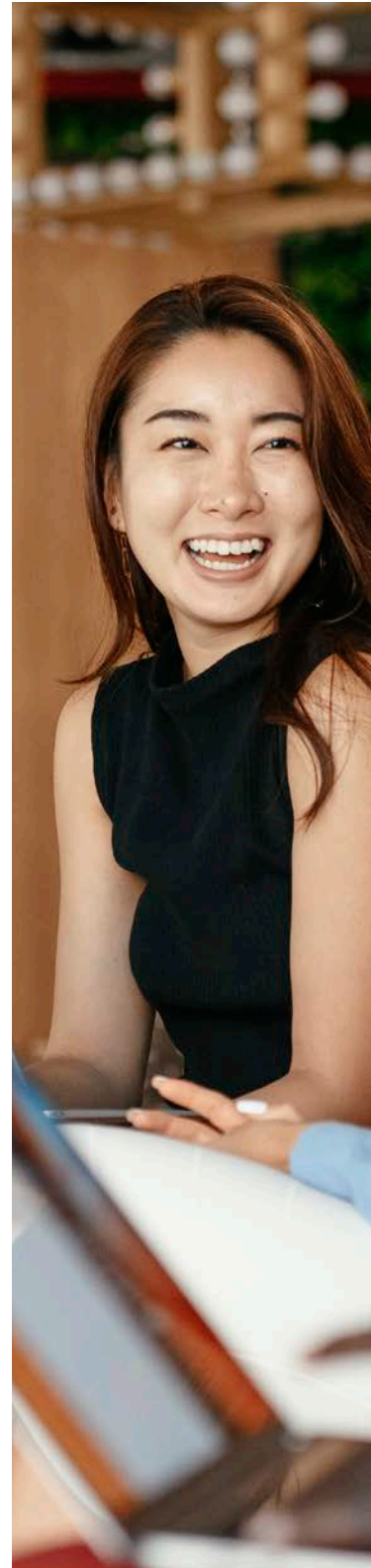
Project Management

Associate Learner Fees

Cancellation Fees

Appeals

Additional Charges



Adult Care

Adult Care Worker TQUK Level 2 End-Point Assessment for ST0005 Adult Care Worker (610/1940/9)	Remote	Face-to-Face
Total EPA cost	£475	£575
Situational Judgement Test (MCQ) resit/retake	First Free, £25 thereafter	
Professional Discussion resit/retake	£75	£175
Lead Adult Care Worker TQUK Level 3 End-Point Assessment for ST0006 Lead Adult Care Worker (610/1941/0)	Remote	Face-to-Face
Total EPA cost	£475	£575
Situational Judgement Test (MCQ) resit/retake	First Free, £25 thereafter	
Professional Discussion resit/retake	£75	£175
Lead Practitioner in Adult Care TQUK Level 4 End-Point Assessment for ST0007 Lead Practitioner in Adult Care (610/1942/2)	Remote	Face-to-Face
Total EPA cost	£775	£875
Observation of Practice resit/retake	£150	£250
Professional Discussion resit/retake	£100	£200
Leader in Adult Care TQUK Level 5 End-Point Assessment for ST0008 Leader in Adult Care (610/1943/4)	Remote	Face-to-Face
Total EPA cost	£800	£900
Observation of Leadership resit/retake	£150	£250
Professional Discussion resit/retake	£100	£200

Business Generics

Customer Service Practitioner TQUK Level 2 End-Point Assessment for ST0072 Customer Service Practitioner (603/2722/4)	Remote	Face-to-Face
Total EPA cost	£500	£600
Showcase resit/retake	£75	£175
Practical Observation resit/retake	-	£175
Professional Discussion resit/retake	£75	£175
Customer Service Specialist TQUK Level 3 End-Point Assessment for ST0071 Customer Service Specialist (603/3830/1)	Remote	Face-to-Face
Total EPA cost	£550	£650
Work Based Project Interview resit/retake	£150	£250
Practical Observation resit/retake	-	£175
Professional Discussion resit/retake	£75	£175
Business Administrator TQUK Level 3 End-Point Assessment for ST0070 Business Administrator (610/0999/4)	Remote	Face-to-Face
Total EPA cost	£600	£700
Multiple Choice Questions Test resit/retake	First Free, £25 thereafter	
Project Presentation resit/retake	£100	£200
Portfolio Interview resit/retake	£100	£200

Childcare and Early Years

Children, Young People and Families Practitioner		
TQUK Level 4 End-Point Assessment for ST0088 Children, Young People and Families Practitioner (603/4801/X)		
	Remote	Face-to-Face
Total EPA cost	£700	£800
Practical Observation resit/retake	£175	£275
Competency Based Interview resit/retake	£125	£225

Children, Young People and Families Manager		
TQUK Level 5 End-Point Assessment for ST0087 Children, Young People and Families Manager (603/4800/8)		
	Remote	Face-to-Face
Total EPA cost	£750	£850
Situational Judgement Test resit/retake*	£75	£75
Competency Based Interview resit/retake	£150	£250

*A £75 surcharge is added for TQUK remote invigilation

Early Years Practitioner		
TQUK Level 2 End-Point Assessment for ST0888 Early Years Practitioner (603/6241/8)		
	Remote	Face-to-Face
Total EPA cost	£550	£650
Multiple Choice Questions Test resit/retake*	First Free, £25 thereafter	
Professional Discussion resit/retake	£75	£175

*A £50 surcharge is added for TQUK in person invigilation

Early Years Educator		
TQUK Level 3 End-Point Assessment for ST0135 Early Years Educator (603/5833/6)		
	Remote	Face-to-Face
Total EPA cost	£600	£700
Multiple Choice Questions Test resit/retake*	First Free, £25 thereafter	
Professional Discussion resit/retake	£75	£175

*A £50 surcharge is added for TQUK in person invigilation

Early Years Lead Practitioner		
TQUK Level 5 End-Point Assessment for ST0551 Early Years Lead Practitioner (610/0974/X)		
	Remote	Face-to-Face
Total EPA cost	£850	£950
Observation of Practice resit/retake	-	£200
Professional Discussion resit/retake	£150	£300
Case Study Presentation resit/retake	£150	£300

Playworker		
TQUK Level 2 End-Point Assessment for ST0867 Playworker (610/2146/5)		
	Remote	Face-to-Face
Total EPA cost	-	£550
Multiple Choice Questions Test resit/retake	First Free, £25 thereafter	
Observation resit/retake	-	£175
Professional Discussion resit/retake	£75	£175

Digital

Digital Marketer TQUK Level 3 End-Point Assessment for ST0122 Digital Marketer (610/1586/6)	Remote	Face-to-Face
Total EPA cost	£1,000	£1,100
Summative Portfolio resit/retake		
Employer Reference resit/retake	£800	£900
Synoptic Project resit/retake		
Interview resit/retake		

Education

Teaching Assistant TQUK Level 3 End-Point Assessment for ST0454 Teaching Assistant (603/3868/4)	Remote	Face-to-Face
Total EPA cost	-	£575
Observation of Practice resit/retake	-	£175
Professional Discussion resit/retake*	£75	£175

*A £50 surcharge is added for TQUK invigilation

Learning Mentor TQUK Level 3 End-Point Assessment for ST0148 Learning Mentor (603/5229/2)	Remote	Face-to-Face
Total EPA cost	£600	£700
Observation of Practice resit/retake	£200	£300
Professional Discussion resit/retake	£75	£175

Assessor Coach TQUK Level 4 End-Point Assessment for ST0146 Assessor Coach (603/5230/9)	Remote	Face-to-Face
Total EPA cost	£800	£900
Observation of Practice resit/retake	£200	£300
Professional Discussion resit/retake	£100	£200

Learning and Skills Teacher v1 TQUK Level 5 End-Point Assessment for ST0149 Learning and Skills Teacher (603/5238/3)	Remote	Face-to-Face
Total EPA cost	£1,100	£1,200
Observation of Practice resit/retake	-	£300
Professional Discussion resit/retake	£200	£300

Learning and Skills Mentor TQUK Level 4 End-Point Assessment for ST1379 Learning and Skills Mentor (610/2927/0)	Remote	Face-to-Face
Total EPA cost	£700	£800
Observation of Practice resit/retake	£200	£300
Professional Discussion resit/retake	£200	£300

Learning and Skills Assessor TQUK Level 3 End-Point Assessment for ST1380 Learning and Skills Assessor (610/2928/2)	Remote	Face-to-Face
Total EPA cost	£600	£700
Observation of Practice resit/retake	£200	£300
Professional Discussion resit/retake	£75	£175

HR

HR Support	Remote	Face-to-Face
TQUK Level 3 End-Point Assessment for ST0239 HR Support (610/1002/9)		
Total EPA cost	£900	£1,000
Consultative Project resit/retake	£200	£200
Professional Discussion resit/retake	£100	£200
HR Consultant Partner	Remote	Face-to-Face
TQUK Level 5 End-Point Assessment for ST0238 HR Consultant Partner (610/1000/5)		
Total EPA cost	£1,200	£1,300
Consultative Project resit/retake	£200	£200
Professional Discussion resit/retake	£100	£200

Hair

Hairdressing Professional v1.1*	Remote	Face-to-Face
TQUK Level 2 End-Point Assessment for ST0213 Hairdressing Professional (603/3259/1)		
Total EPA cost	-	£350
Observation and Questioning resit/retake	-	£250

*No remote options are available for the standard

Hairdressing Professional v1.2*	Remote	Face-to-Face
TQUK Level 2 End-Point Assessment for ST0213 Hairdressing Professional (603/3259/1)		
Total EPA cost	-	£550
Multiple Choice Questions Test resit/retake	First free, £25 thereafter	
Practical Assessment resit/retake	-	£250
Professional Discussion resit/retake**	£75*	£175

*Initial assessment face-to-face only for 1-2 apprentices.

**For 1-2 apprentices, the professional discussion takes place on the same day. If you do not wish for the professional discussion to be sat on the same day, there is a £100 surcharge for it to take place remotely on a separate day. For 3-4 apprentices, the professional discussion takes place on a separate day remotely with no surcharge.

Barbering Professional*	Remote	Face-to-Face
TQUK Level 2 End-Point Assessment for ST1273 Barbering Professional (610/2926/9)		
Total EPA cost	-	£450
Multiple Choice Questions Test resit/retake	First free, £25 thereafter	
Practical Assessment resit/retake	-	£250
Professional Discussion resit/retake**	£75*	£175

*Initial assessment face-to-face only for 1-3 apprentices.

**For 1-3 apprentices, the professional discussion takes place on the same day. If you do not wish for the professional discussion to be sat on the same day, there is a £100 surcharge for it to take place remotely on a separate day. For 4 apprentices, the professional discussion takes place on a separate day remotely with no surcharge.

Advanced and Creative Hair Professional*	Remote	Face-to-Face
TQUK Level 3 End-Point Assessment for ST0214 Advanced and Creative Hair Professional (603/6242/X)		
Total EPA cost	-	£450
Multiple Choice Questions Test resit/retake	First Free, £25 thereafter	
Observation and Questioning resit/retake	-	£250
Professional Discussion resit/retake	£75	£175

*No remote options are available for the standard

Leadership and Management

Team Leader or Supervisor v1* TQUK Level 3 End-Point Assessment for ST0384 Team Leader or Supervisor (610/1004/2)	Remote	Face-to-Face
Total EPA cost	£550	£650
Multiple Choice Questions Test resit/retake	First Free, £25 thereafter	
Competency Interview resit/retake	£75	£175
Portfolio of Evidence resit/retake	£100	-
Professional Discussion resit/retake	£75	£175

*No new registrations are being accepted

Team Leader or Supervisor v1.2 TQUK Level 3 End-Point Assessment for ST0384 Team Leader or Supervisor (610/1004/2)	Remote	Face-to-Face
Total EPA cost	£550	£650
Presentation with Questions & Answers resit/retake	£75	£175
Professional Discussion resit/retake	£75	£175

Operations or Departmental Manager v1* TQUK Level 5 End-Point Assessment for ST0385 Operations or Departmental Manager (610/1003/0)	Remote	Face-to-Face
Total EPA cost	£1,000	£1,100
Multiple Choice Questions Test resit/retake	First Free, £25 thereafter	
Competency Interview resit/retake	£75	£175
Portfolio of Evidence resit/retake	£100	-
Professional Discussion resit/retake	£75	£175
Work Based Project with Questions & Answers resit/retake	£150	£250

*No new registrations are being accepted

Operations or Departmental Manager v1.2 TQUK Level 5 End-Point Assessment for ST0385 Operations or Departmental Manager (610/1003/0)	Remote	Face-to-Face
Total EPA cost	£1,000	£1,100
Project Proposal, Presentation and Questioning resit/retake	£100	£200
Professional Discussion resit/retake	£100	£200

Learning and Development

Learning and Development Practitioner TQUK Level 3 End-Point Assessment for ST0562 Learning and Development Practitioner (603/3867/2)	Remote	Face-to-Face
Total EPA cost	£950	£1,050
Work Based Project / Professional Discussion resit/retake	£200	£300
Learning Journal Presentation resit/retake	£200	£300

Learning and Development Consultant Business Partner TQUK Level 5 End-Point Assessment for ST0563 Learning and Development Consultant Business Partner (603/3866/0)	Remote	Face-to-Face
Total EPA cost	£1,100	£1,200
Work Based Project / Professional Discussion resit/retake	£200	£300
Learning Journal Presentation resit/retake	£200	£300

Poultry

Poultry Technician TQUK Level 3 End-Point Assessment for ST0467 Poultry Technician (610/2112/X)	Remote	Face-to-Face
Total EPA cost	£1,200	-
Short Answer Knowledge Test resit/retake	£75	-
Observation and Video Tasks resit/retake	£150	-
Interview resit/retake	£100	-

Poultry Worker TQUK Level 2 End-Point Assessment for ST0389 Poultry Worker (610/2111/8)	Remote	Face-to-Face
Total EPA cost	£925	-
Multiple Choice Questions Test resit/retake	First Free, £25 thereafter	-
Observational Practical Assessment and Video Task resit/retake	£150	-
Professional Discussion resit/retake	£75	-

Project Management

Associate Project Manager TQUK Level 4 End-Point Assessment for ST0310 Associate Project Manager (610/0996/9)	Remote	Face-to-Face
Total EPA cost	£1,000	£1,100
Portfolio Presentation resit/retake	£200	£300
Professional Discussion resit/retake	£200	£300



Associate Learner Fees

Cancellation Fees

	Remote	Face-to-Face	Multiple Choice Questions Test	Short Answer Questions Test	Assessment Planning Meeting
Level 2	£100	£200	£25	N/A	£35
Level 3	£100	£200	£25	N/A	£35
Level 4	£200	£300	£25	N/A	£35
Level 5	£200	£300	£25	£75	£35

Appeals

Appeals which are not upheld are subject to a fee of £100 per appeal. Appeals which are upheld are not billed. Please read our [Appeals Policy](#) for more information.

Additional Charges

Where an extra day is required to undertake planned Face-to-Face assessment, TQUK reserves the right to charge an “Additional Assessment Day surcharge” per affected Apprentice.

Invigilation surcharges for assessment components may be incurred and are proportionate to the assessment component and the assessment preference. The surcharge will be noted alongside the standards in this document.

